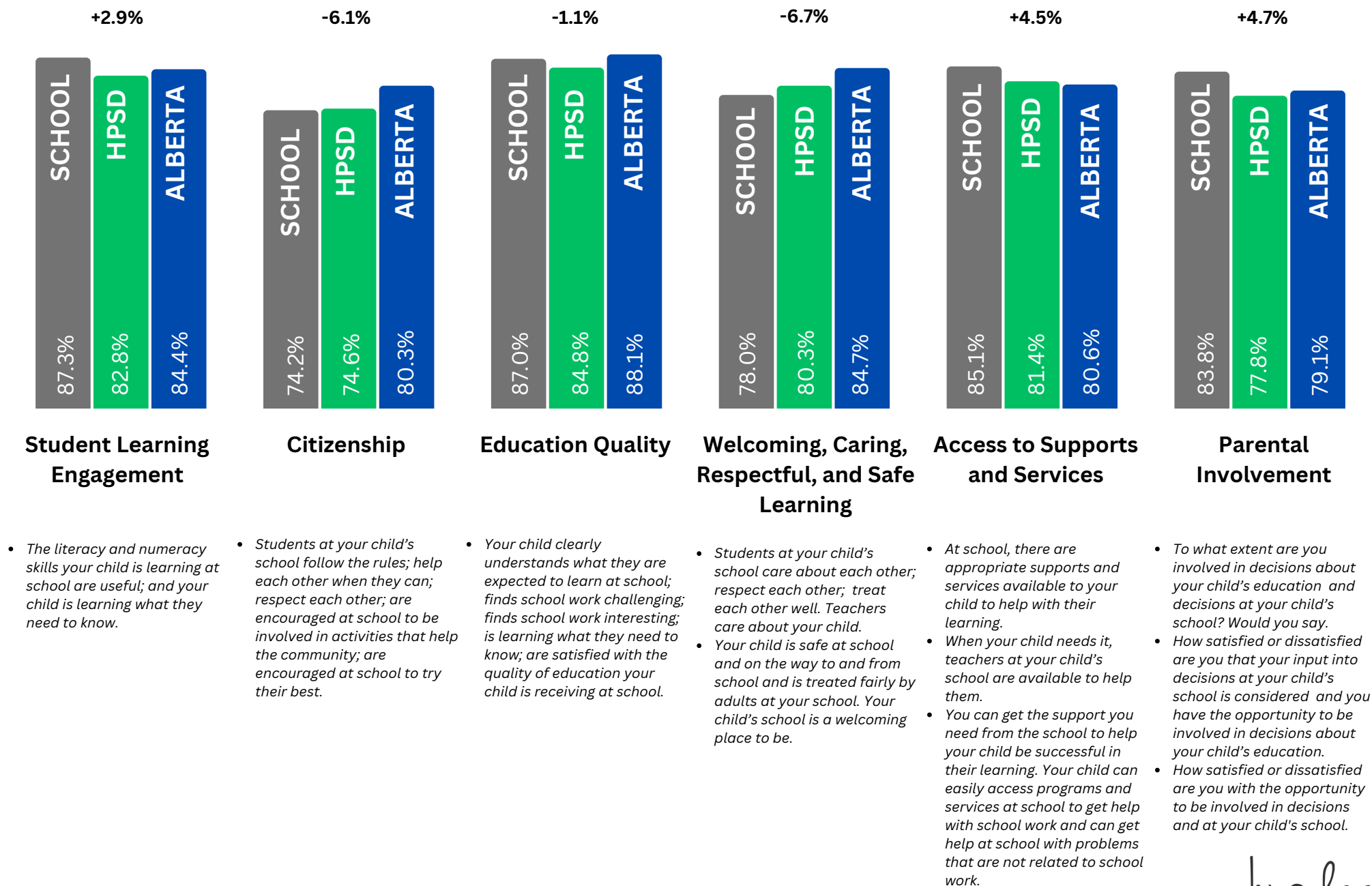
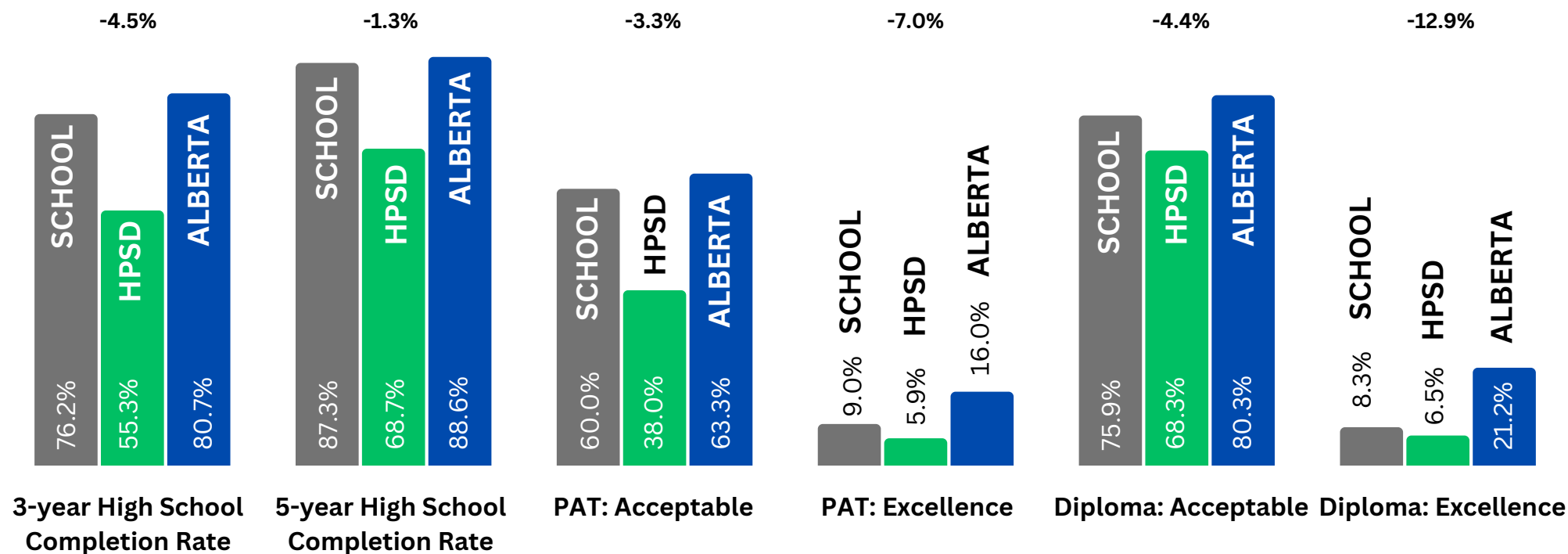


Georges P. Vanier School

Annual Education Results Report

2022-23





- Alberta Education calculates the rate at which Alberta students complete high school within three, four, and five years of starting Grade 10.
- The High School Completion rate is calculated by dividing the number of high school completers by the number of students in the Grade 10 Cohort, adjusted for attrition.
- Provincial Achievement Test (PAT) acceptable is the percentage of students who achieve the acceptable standard on grades 6 and 9 Provincial Achievement Tests.
- Provincial Achievement Test (PAT) excellence is the percentage of students who achieve the excellence standard on grades 6 and 9 Provincial Achievement Tests.
- Diploma: Acceptable is the percentage of students who achieve an acceptable standard (mark of 50% or more) on a diploma exam.
- Diploma: Excellence is the percentage of students who achieve an excellence standard (mark of 80% or more) on a diploma exam.

Annual Education Results Report - Provincial Achievement Tests and Diploma Exams

